

## **High Voltage Connectors and Damping Impedances**



**THE ADVANCED SOLUTION FOR  
HIGH VOLTAGE AC TESTING**

**agea - kull ag**  
Electric Apparatus, Meisenweg 1  
CH-4552 **Derendingen** Switzerland

Fon: +41 32 681 54 24  
Fax: +41 32 681 54 20

E-mail: [info@agea-kull.ch](mailto:info@agea-kull.ch)  
Web: [www.agea-kull.ch](http://www.agea-kull.ch)

**High Voltage Connectors and Damping Impedances**

**High Voltage Connectors in Kit Design**

agea-kull high voltage connectors are part of a construction kit system and connectable to any other element of the same type series .  
 A bayonet nut fastening system allows joining of the elements with each other. End heads with extendible keyhole bolts ensure a length flexible fixing in the key holes of a double toroid or in keyhole brackets.  
 The high voltage connectors can be used with all agea-kull test sets. For the installation in test systems of other manufacturers, special end heads can be delivered.

**Type Series**

agea-kull high voltage connectors are available in following diameters:  
 Ø100 / Ø160 / Ø200 / Ø250 mm

**Connectors**

We can deliver:

- End heads with extendible keyhole bolts
- Connectors in the lengths of 0.5 / 1 / 2 / 3 m
- Angle sections 45° with and without extendible keyhole bolts
- Flexible connectors with spiral coiled tubes

**Damping Elements**

The damping elements have the same diameters and the same bayonet nut fastening system as the high voltage connectors and can therefore be jointed with them.

They are used as protection impedances in case of test object breakdowns and have additionally a filtering effect against partial discharge noise impulses. The single layer coils are protected against humidity and other ambient influences by use of a silicone or cast resin coat.

More elements can be jointed in series to adapt the impedance to the required protection level. Parallel connection to increase the maximal allowed test current is possible too.

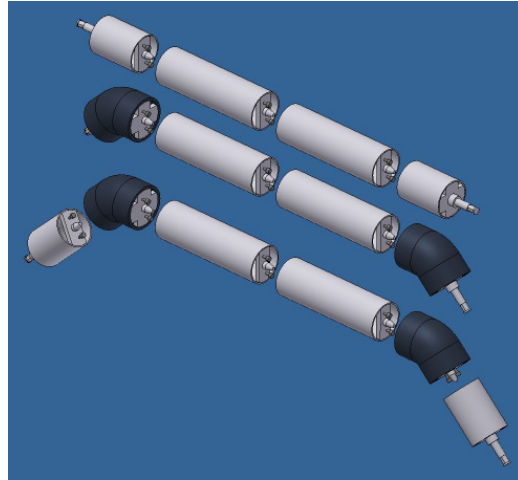


damping elements with customized end heads

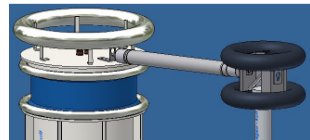
**Typical Damping Elements**

Type	Dimension mm	Voltage kV	Current A	Inductance mH	Resistance Ω
DD200-1-40	Ø100 x 1300	200	1	40	75
DD250-2.5-20	Ø160 x 1500	250	2.5	25	10
DD200-5-15	Ø200 x 1100	200	5	15	4
DD280-12-10	Ø250 x 1100	280	12	10	1.5
DD300-17-10	Ø250 x 1500	300	17	10	1.2

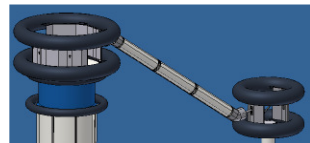
**Connectors**



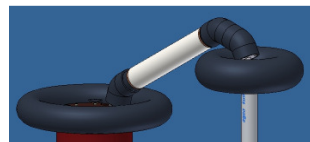
**Examples of High Voltage Connections**



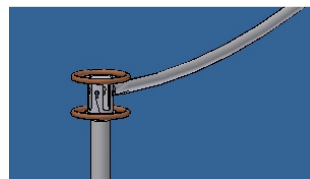
straight



angular



cranked



flexibel